

Homeland Security Solutions

Services and Capabilities:

Sonalysts provides engineering, technical, and production capabilities that deliver cutting-edge solutions for homeland security applications. Sonalysts is recognized for superior business performance, outstanding achievement and quality, sound financial practices, and superior industrial security. Select examples of our ground-breaking work include:

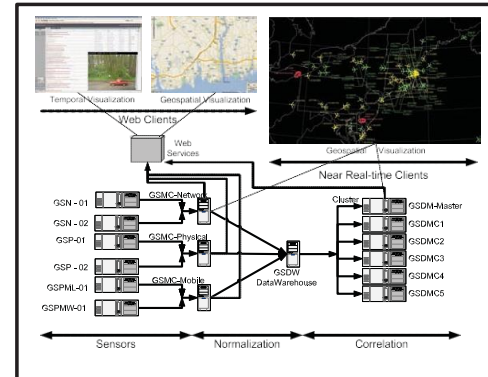
- Domain awareness applications
- Automatic Identification System (AIS) development
 - *Synthesis, design, and validation*
- Design and implementation of efficient stream data-mining
- Intelligent storage for high-bandwidth data systems
- Teaming and project expertise in port security/vulnerability, threat assessments, and mitigation
- 3D visualization
- Interactive large-scale simulation environments
 - *Run execution, data research, compilation and input, run monitoring, and output analysis*
- Crowd-sourcing platforms to capture, process, exploit, and disseminate datasets across disparate stakeholders
- 25+ years of experience as designers, controllers, evaluators, and analysts of exercises and games for the Department of Homeland Security (DHS), Coast Guard, Federal Emergency Management Agency (FEMA), and Naval War College
- Capability Maturity Model Integration (CMMI) Level 3 appraised
- ISO 9001:2015 certified

**CREATING INNOVATIVE SOLUTIONS BY
LEVERAGING OUR HOLISTIC THINKING,
CREATIVITY, AND TECHNICAL
PROWESS.**



Sonalysts Facilities:

Sonalysts' corporate headquarters are located in Waterford, CT with additional offices located throughout the U.S. Sonalysts' headquarters and several of its other offices have Top Secret facility clearances granted by the Defense Security Service (DSS). Sonalysts maintains an accredited Sensitive Compartmented Information Facility (SCIF) at the Waterford, CT site. In addition, Sonalysts has a sensor fabrication laboratory, weather and flight tracking laboratory, state-of-the-art-recording studio, and sound stages.



An Integrated Threat Architecture. Dynamic and adaptable, allowing the integration, normalization, and correlation of various types of sensor data.

Technical Expertise:

Our diverse staff spans the computational and social sciences, and includes DHS/DoD domain experts. We employ hundreds of software, computer, electrical, and mechanical engineers; computer scientists; physical scientists; mathematicians; human factors engineers and experimental psychologists; training and instructional design experts; and publication, film, graphical, and broadcast media specialists. Sonalysts' broad set of core competencies includes:

- Software and hardware development and integration
- Data fusion and analysis
- Design, fabrication, and systems testing
- Instructional design and training systems development
- Operations research and analysis
- Human factors engineering
- Human systems integration
- Modeling and simulation
- Rapid prototyping

Points of Contact:

Matt Gimple
(860) 326-3913
mgimple@sonalysts.com

Steve Dorton
(860) 326-3646
sdorton@sonalysts.com